



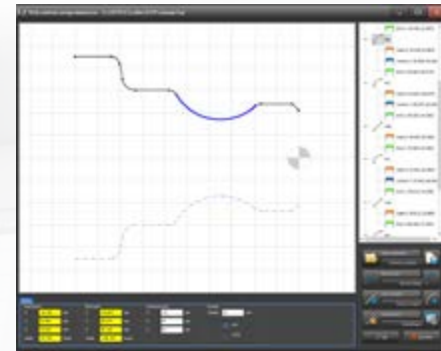
STYLE lathe

The best lathe for small series

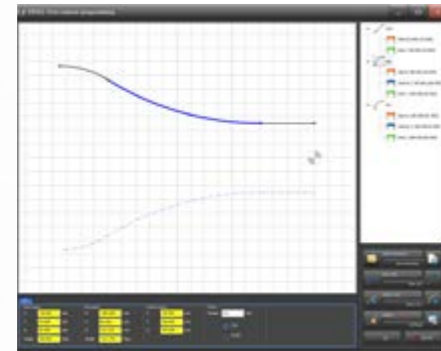
Machinebuilders since 1991

STYLE lathe

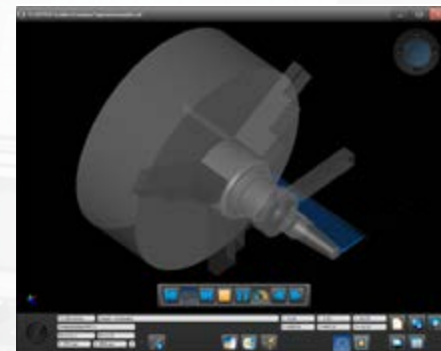
The best lathe for small series



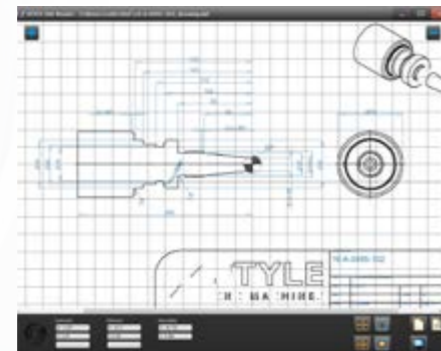
Easy and fast programming



Free contour drawing with a minimum of values



3D simulation for testing and time calculation



DxF import from CAD software



STYLE 300



STYLE 350



STYLE 510



STYLE 750



STYLE 1200

Easy, smart and simple programming

- Extensive CNC functionality
- 3D simulation program
- Graphic interface on 19" touchscreen
- DxF files import
- Free contour drawing with a minimum of values
- ISO G-codes import, edit and execute
- Easy to learn and use

- Shortcuts and key codes for faster working
- Execute of large G-code programs
- Program with an extensive intuitive control without any G-code knowledge
- Thread repair and prototyping
- Desktop prep version

The best lathe for small series

- For single pieces and small series
- Easy and intuitive control
- Modern and ergonomic design
- 7 models with diameters from 320 mm up to 1200 mm
- Distance between centers 500 mm up to 5000 mm
- Double prism and accurate guides

- Stable castiron frame
- Fully enclosed machine, CE approved
- Optimal accessibility and operational ease
- Complete Dutch design and development
- Produced and controlled from Holland
- Several options possible

Machinebuilders since 1991

STYLE 300-1200 series

Technical specifications



Machine		STYLE 300	STYLE 350	STYLE 510	STYLE 650	STYLE 750	STYLE 1000	STYLE 1200
Swing over bed	mm	320	380	510	650	750	1000	1200
Swing over support	mm	180	190	300	430	530	710	910
Distance between centers	mm	500	850	1350 / 1850 ¹	900 / 1900 / 2900 / 3900		2200 / 3200 / 4000 / 5000	
Bed width	mm	190	305	330	450	450	560	
Maximum weight between centers	kg	-	300	600 / 750 ²	1500	1500 / 2000 ²	3200 / 3500 ²	
Main spindle								
Main motor power (S6)	kW	3.7	5.5 / 7.5	7.5 / 11	23 / 27.5 / 35	23 / 27.5 / 35	27.5 / 35	
Spindle bore	ø mm	40	54	80 / 102	105	105 / 155 / 188 / 230	105 / 250 / 305	
Max main spindle torque (S6)	Nm	47.8	373 / 509	718 / 1050 (80)	3450 / 4140 / 7900 (105)	4090 / 4870 / 9290 (155)	22725 / 43385 (155)	
with gearbox				1180 (102)		5875 / 11217 (180/230)	43730 / 83490 (250/305)	
Max spindle speed	rpm	4000	3000 / 4000	2500 (80) / 2100 (102)	2000 (105)	2000 (105) / 1500 (155)	600 (250/305) / 800 (155)	
Spindle taper		D1-4	D1-6	D1-8	D1-11	D1-11 / A2-11 / A2-15	A2-11 / A2-15 / A2-20	
X- and Z-axis								
Ball screw spindle ø X-axis	mm	16	25	25	32	32	40	40
Ball screw spindle ø Z-axis	mm	25	40	40	50	50 / 63	63	63
Rapid movement	m/min	8	8	8	8	8	8	8
Feed rate	mm/min	0.01 - 1000	0.01 - 2000	0.01 - 2000	0.01 - 2000	0.01 - 2000	0.01 - 2000	0.01 - 2000
Tail stock								
Quill	ø mm	40	54	75 / 80 ²	105	105 / 125 ²	105 / 165 ²	105 / 165 ²
Quill stroke	mm	100	100	150	225	225	275	275
Quill taper	MT	3	4	5	5	5 / 6 ²	6	6
General								
Weight	kg	800	2000	2700 / 3250	4700 / 5700 / 6800 / 7900		7000 / 8200 / 9000 / 10000	
Machine dimensions (l/w/h)	m	1.8 x 1.0 x 1.2	2.5 x 1.8 x 1.8	3.2 x 1.8 x 1.8 (1350) 3.2 x 1.8 x 1.8 (1850)	3.1 x 2.3 x 2.2 (900) 4.1 x 2.3 x 2.2 (1900) 5.1 x 2.3 x 2.2 (2900) 6.1 x 2.3 x 2.2 (3900)		4.5 x 2.8 x 2.4 (2200) 5.5 x 2.8 x 2.4 (3200) 6.3 x 2.8 x 2.4 (4000) 7.3 x 2.8 x 2.4 (5000)	
Options								
Automatic gear change		-	-	-	standard	standard	standard	standard
Automatic chip conveyor		-	option	option	standard	standard	standard ³	standard ³
Automatic tool changer		-	option	option	option	option	option	option
Spindle indexing		-	-	-	option	option	option	option
Automatic tool changer with driven tools		-	-	-	option	option	option ⁴	option ⁴
Steady rest (3 points)	ø mm	-	10 - 300	20 - 150 / 10 - 300	50 - 300 / 60 - 400	50 - 300 / 60 - 400	50-380 / 380-650 / 650-800 (1200)	
Steady rest (2 points)	ø mm	-	-	-	-	380 - 500	470 - 700	

¹ With heavy tail stock dbc is 1200/1700 ² Possible with heavy duty tail stock
³ Two standard chip conveyors ⁴ Automatic changer at front of X-support



STYLE CNC Machines NL

Het Steenland 15
 3751 LA Bunschoten, The Netherlands
 info@stylecncmachines.com
 +31 (0)33 - 20 525 00



STYLE CNC Machines CZ

Stanovice 37
 544 01 Dvůr Králové nad Labem, Czech Republic
 info@stylecncmachines.cz
 +420 499 421 713



STYLE CNC Machines PL

ul. Zuzanny 34
 41-219 Sosnowiec, Poland
 info@stylecncmachines.pl
 +48 883 444 723



STYLE CNC Machines BE

Vlierstraat 5
 B-8790 Waregem, Belgium
 info@stylecncmachines.be
 +32 497 322 109

Correspondence
 PO box 136
 3750 GC Bunschoten
 Holland

Production and showroom
 Het Steenland 15
 3751 LA Bunschoten
 Holland

T +31 33 - 205 25 00
 E info@stylecncmachines.com
 I www.stylecncmachines.com