



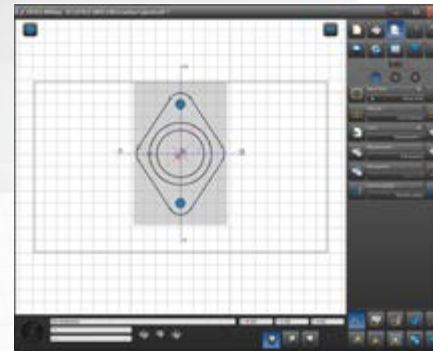
Machine center MC series

The best mill for the demanding specialist

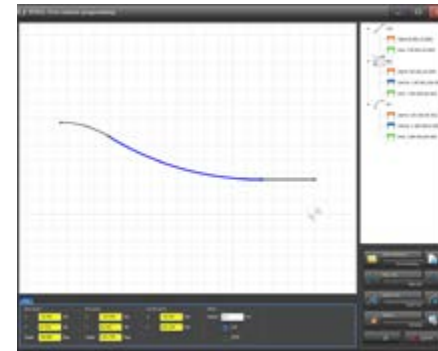
Machinebuilders since 1991

Machine center MC series

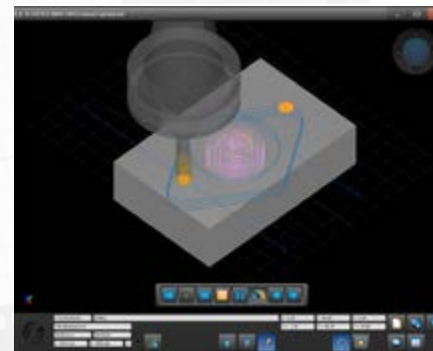
The best mill for the demanding specialist



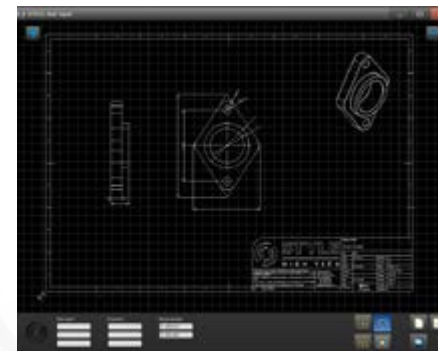
Easy and fast programming



Free contour drawing with a minimum of values



3D simulation for testing and time calculation



DxF import from CAD software



Easy, smart and simple programming

- Extensive CNC functionality
- 3D simulator program
- Graphic interface on 19" touchscreen
- DxF files import
- Free contour drawing with a minimum of values
- ISO G-codes import, edit and execute
- Easy to learn and use
- Shortcuts and key codes for faster working
- Execute of large G-code programs
- Program with an extensive intuitive control without any G-code knowledge
- Thread repair and prototyping
- Desktop preparation version

The best mill for the demanding specialist

- Class C3 tensioned ballscrew spindles prevent thermal expansion for high accuracy
- The X/Y/Z axis is directly driven by the axis motors for the best positioning accuracy
- Table sizes of 900x410 and 1200x520 mm
- 2 models with X/Y movement from 760x440 to 1000x560 mm
- Stable cast iron frame with linear guides
- Modern CNC machine for productivity, flexibility and easy control
- Designed and built by machine builders
- Optional equipped with other control
- Dutch Design and production

Machinebuilders since 1991

Machine center MC series

Technical specifications

Machine		MC 350	MC 500	MC 750	MC 1000	MC 1500
X axis movement	mm	350	500	760	1000	1500
Y axis movement	mm	210	380	440	560	680
Z axis movement	mm	340	400	460	550	880
Table size	mm	810 × 250	650 × 380	900 × 410	1200 × 520	1700 × 600
T-slots(DIN 650)	mm	3 × 16	18 × 100 × 3	16 × 100 × 4	16 × 80 / 100 × 5	18 × 100 × 5
Max. tableload	kg	80	200	350	800	1000
Work height table	mm	850	805	820	870	860
Distance spindle nose to table	mm	50-390	150 - 550	100 - 560	100 - 650	100 - 980
Distance spindle nose to column	mm	260	435	475	600	720
Hoofdspindel						
Main motor power	kW	3.7	3.7 / 5.5	5.5 / 7.5	11 / 15	11 / 15
Maximum spindle speed	rpm	8000	12000	8000 (10000)	10000 (12000)	10000 / 12000
Spindle taper	BT - SK/DIN69871	30 ¹	30 ¹	40 ¹	40 ¹	40 ¹
X-, Y- en Z-as						
Rapid movement	m/min	15 / 15 / 15	24 / 24 / 24	24 / 24 / 24	24 / 24 / 24	24 / 24 / 24
Feed rate	m/min	10 / 10 / 10	10 / 10 / 10	10 / 10 / 10	12 / 12 / 12	12 / 12 / 12
Pressure	kN	2.9 / 4.4	2.3	6.4 / 12.7 14.5 / 28.5 (Z)	9.6 / 19.3	9.6 / 19.3
Wisselaar						
Automatic tool changer	#	8	20	16 / 24	20 / 24	24 / 30
Algemeen						
Weight	kg	1400	2900	4600	6700	8800
Machine dimension (l/w/h)	m	1.4 × 1.4 × 2.0	1.6 × 2.2 × 2.4	2.2 × 2.3 × 3	3.0 × 2.8 × 3.1	4.2 × 2.8 × 3.2
Workspace	m	2.9 × 2.9	3.1 × 3.7	3.7 × 3.3	4.7 × 3.7	5.7 × 4.4

¹Choose BT or SK/DIN69871

STYLE CNC Machines BV reserves the right to alter specifications without prior notice © 2020 STYLE CNC Machines BV | V2020.MC.01



STYLE CNC Machines NL

Het Steenland 15
 3751 LA Bunschoten, The Netherlands
 info@stylecncmachines.com
 +31 (0)33 - 20 525 00



STYLE CNC Machines CZ

Stanovice 37
 544 01 Dvůr Králové nad Labem, Czech
 info@stylecncmachines.cz
 +420 499 421 713



STYLE CNC Machines PL

ul. Zuzanny 34
 41-219 Sosnowiec, Poland
 info@stylecncmachines.pl
 +48 883 444 723



STYLE CNC Machines BE

Vlierstraat 5
 B-8790 Waregem, Belgium
 info@stylecncmachines.be
 +32 497 322 109

Correspondence
 PO box 136
 3750 GC Bunschoten
 Holland

Production and showroom
 Het Steenland 15
 3751 LA Bunschoten
 Holland

T +31 33 - 205 25 00
 E info@stylecncmachines.com
 I www.stylecncmachines.com